

*antheia*  
Pimpri, Pune

by



*An ideal home helps  
life flourish!*



## *Antheia – For blissful moments*

Antheia is nestled in the lush green bounty of nature. Wake up every morning to the twittering of birds. Large open spaces for your children to let loose their carefree spirit. Exciting amenities to indulge every family member. A haven where every aspect of your life comes together in an enriching manner. An environment to stimulate not just your body, but also your mind.

Come home to Antheia. Come home to a happy family!



### *Antheia – For a fulfilling life*

Pune, the cultural capital of Maharashtra, is a city buzzing with business opportunities. The presence of a wide range of industries ranging from IT to hospitality to automotive has catapulted Pune as the 'Detroit of India' and made it an ideal career destination.

Antheia, the latest residential offering by Mahindra Lifespaces is located in the major industrial and manufacturing hub of Pune, Pimpri-Chinchwad. Over the last few years, Pimpri-Chinchwad has evolved as a preferred residential pocket in North-West Pune and is witnessing a huge influx of professionals like you.

Come home to Antheia. And strike the right work-life balance!





### *Antheia - Be spoilt for choice*

Cherish a home that allows you to rediscover your childhood. A home, with plenty of space and opportunity for a family to experience quality time together. Choose Antheia and know the joys of enjoying your perfect home. A 1 BHK for a small family or a 3 BHK fit for a king. On offer are apartments to suit your requirement.

- 1 BHK
- 2 BHK
- 2.5 BHK
- 3 BHK compact
- 3 BHK premium

Come home to Antheia. Where choice is your birth-right!



## *Antheia - For a magical experience*

At Antheia, staying fit in body and mind is easy. A swimming pool tempts you to yet another lap while your young ones paddle and splash in the toddler's pool. The multi-purpose court, amphitheatre and tennis court are amenities you will crave to explore, even after a hard day at work. At the clubhouse, choose between chasing your queen on the carrom board or relishing a kiss shot at the billiards table or smashing balls in the squash court. Burn calories in the well-appointed gym or retreat to a serene spot for an introspective moment.

Clink glasses at the multi-purpose hall or move your party to the lush green lawns and appreciate a display of talent in the amphitheatre.

Come home to Antheia. A holistic treat for the body, mind, heart and soul.

ZRICKS



## *Antheia – Green & healthy living*

Every Mahindra Lifespaces development complies with IGBC (Indian Green Building Council) 'Green Home Rating System'. So, choosing an Antheia home is not only the right choice you're making for yourself but are also being an environment conscious citizen.

Mahindra Lifespaces believes in sustainable principles that make their projects 'Green Building Compliant'. You will find most of them used at Antheia too.



### Rainwater harvesting

An integrated rainwater harvesting system enhances the ground water table and reduces the municipal water demand effectively.



### Alternative building material

The use of alternative material like HVFAC (High Volume Flyash Concrete) in building internal roads and car park area, helps minimise carbon footprint.



### Energy efficient

Large windows stream in daylight while energy efficient utilities like lifts, lighting and pumps, etc. cut electricity bills.



### Health-friendly indoors

Low Volatile Organic Compound (VOC) content paints and adhesives help you breathe easy. Insulation and sealants provide improved moisture management and enhance occupant productivity.



### Top soil preservation

The lush landscaping at every site is done from the stockpiled top soil dug up during the foundation stage of the project. This soil is excavated and preserved for future landscaping.



### Sustainable locations

Basic amenities like shops, schools, markets, banks, medicals, restaurants, hospitals and public transit facility, etc. are in close proximity. This cuts commuting time, fuel costs and vehicular emissions.



## Master Plan



- The plans, drawings, amenities, specifications are subject to approval of the respective authorities and could be changed if necessary. The discretion remains with the developer.
- This plan is tentative and discretion of any changes in plan remains with the developer.
- Landscaped gardens are indicative, subject to change as per landscape design or any other requirement.



**Notes:**

- All the plans, drawings, amenities, specifications are subject to approval of the respective authorities and could be changed if necessary. The discretion remains with the developer.
- All dimensions are unfinished between wall to wall. Dimensions are derived by the metric system and will have a variation when converted to British System.



**Notes:**

- All the plans, drawings, amenities, specifications are subject to approval of the respective authorities and could be changed if necessary. The discretion remains with the developer.
- All dimensions are unfinished between wall to wall. Dimensions are derived by the metric system and will have a variation when converted to British System.



**Notes:**

- All the plans, drawings, amenities, specifications are subject to approval of the respective authorities and could be changed if necessary. The discretion remains with the developer.
- All dimensions are unfinished between wall to wall. Dimensions are derived by the metric system and will have a variation when converted to British System.



Notes:



Notes:

- All the plans, drawings, amenities, specifications are subject to approval of the respective authorities and could be changed if necessary. The discretion remains with the developer.
- All dimensions are unfinished between wall to wall. Dimensions are derived by the metric system and will have a variation when converted to British System.



**Notes:**

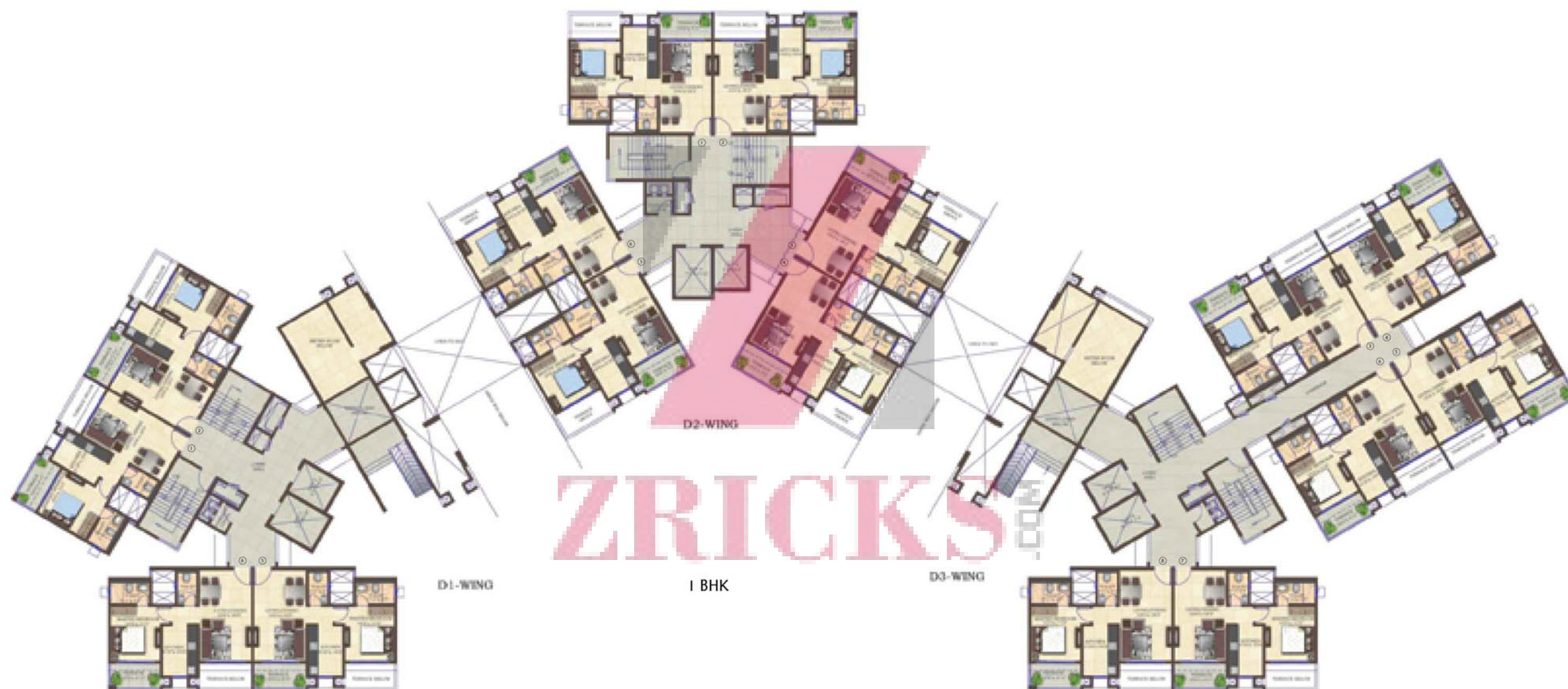
- All the plans, drawings, amenities, specifications are subject to approval of the respective authorities and could be changed if necessary. The discretion remains with the developer.
- All dimensions are unfinished between wall to wall. Dimensions are derived by the metric system and will have a variation when converted to British System.



**Notes:**

- All the plans, drawings, amenities, specifications are subject to approval of the respective authorities and could be changed if necessary. The discretion remains with the developer.
- All dimensions are unfinished between wall to wall. Dimensions are derived by the metric system and will have a variation when converted to British System.

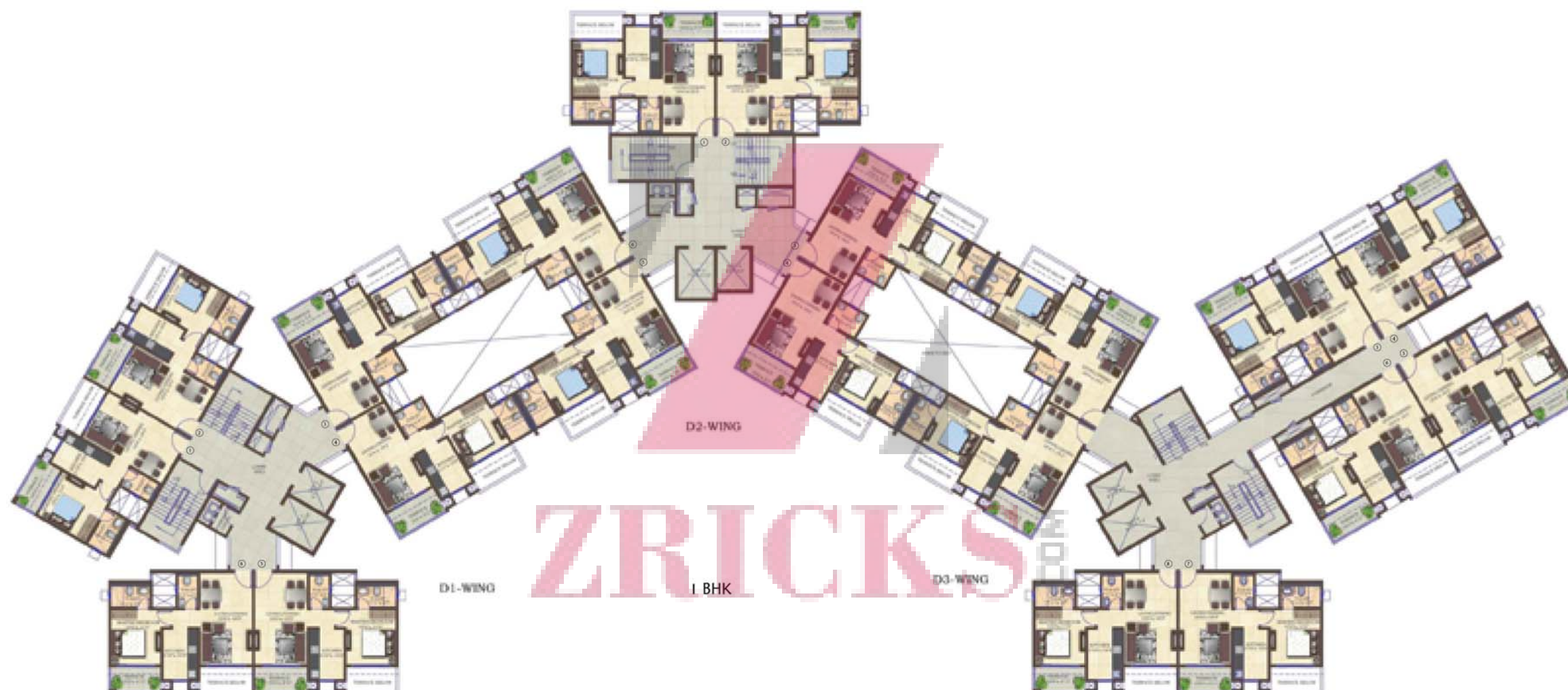




D- FIRST FLOOR

Notes:

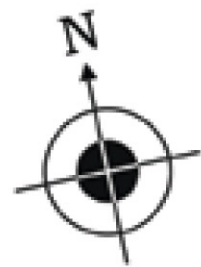
- All the plans, drawings, amenities, specifications are subject to approval of the respective authorities and could be changed if necessary. The discretion remains with the developer.
- All dimensions are unfinished between wall to wall. Dimensions are derived by the metric system and will have a variation when converted to British System.



D- TYPICAL ODD FLOOR

Notes:

- All the plans, drawings, amenities, specifications are subject to approval of the respective authorities and could be changed if necessary. The discretion remains with the developer.
- All dimensions are unfinished between wall to wall. Dimensions are derived by the metric system and will have a variation when converted to British System.



D- TYPICAL EVEN FLOOR

Notes:

- All the plans, drawings, amenities, specifications are subject to approval of the respective authorities and could be changed if necessary. The discretion remains with the developer.
- All dimensions are unfinished between wall to wall. Dimensions are derived by the metric system and will have a variation when converted to British System.



**Mahindra Lifestance Developers Ltd.**

**Corporate office:**

Mahindra Towers, 5<sup>th</sup> Floor, Dr. G M Bhosale Marg, P K Kurne Chowk, Worli, Mumbai 400 018. Tel: 022-3327 3000, 3949 3300/54. Fax: 022-2497 5084.

Website: [www.mahindralifespaces.com](http://www.mahindralifespaces.com) Email: [homes@mahindralifespaces.com](mailto:homes@mahindralifespaces.com)

**Sales office:**

Mahindra Lifestance Developers Ltd., CTS No. 6017, Nehru Nagar Road, Near Dr. Beck's, Pimpri 411 018, Pune. Tel: 020-3267 7290/92. Mobile: 9011037231/2/5/8

Email: [antheia-mldl@mahindralifespaces.com](mailto:antheia-mldl@mahindralifespaces.com)

**Disclaimer:** This communication is purely conceptual and not a legal offering. It is made only for promotional purposes.

The information contained in this communication is only indicative of the kind of development that is proposed and is subject to change.

Mahindra Lifestance Developers Ltd. reserves the right to make changes or alterations.